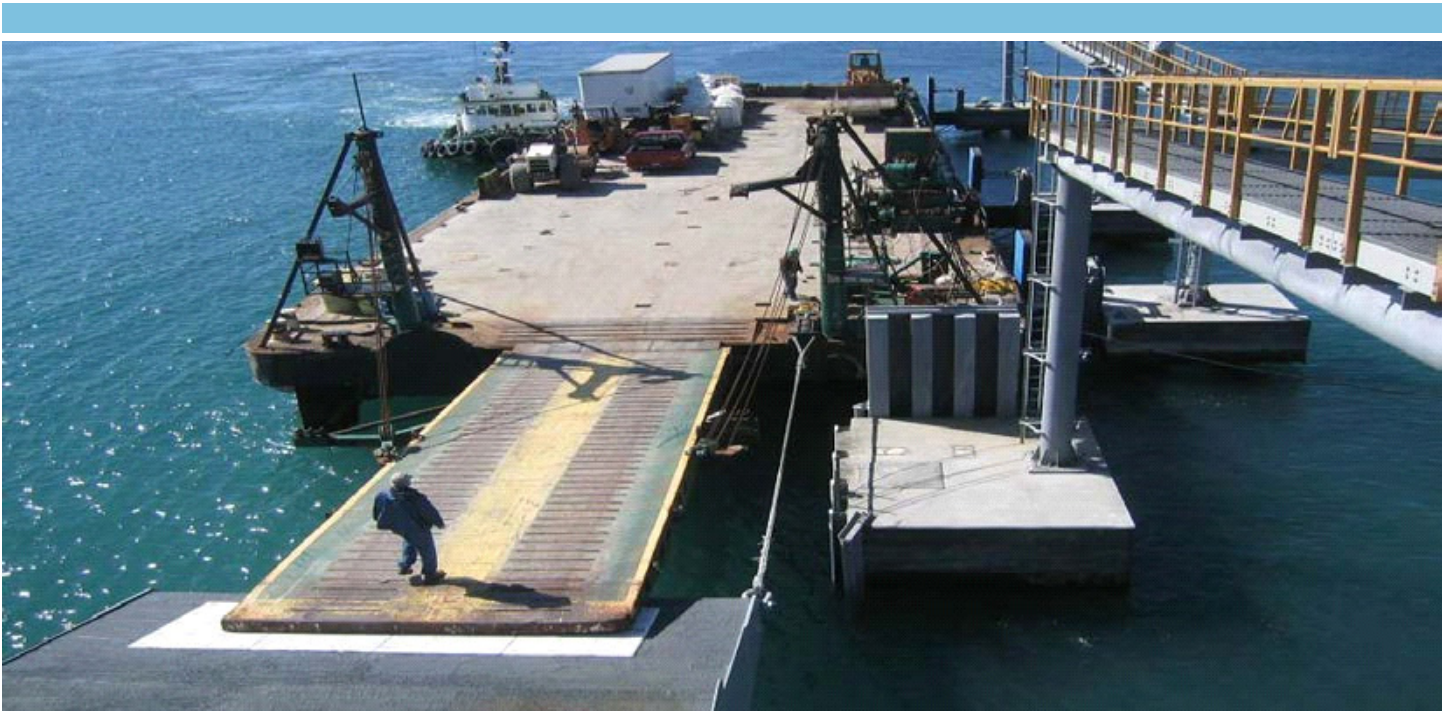


PT&S 379



VESSEL SHEET

Official # 507642 ABS # Size 178'x50'x12' Hull # 379



VESSEL DESCRIPTION	
VESSEL CLASS	Deck Barge with Ramp
SERVICES	
CLASS NOTATIONS	
HAILING PORT	Anchorage, AK
KEEL LAID	
DELIVERY	1967
BUILDER	NASSCO, San Diego, CA

DECK CAPACITIES	
USABLE DECK ARE	
WEAR DECK	YES
DEADWEIGHT	
TEU CAPACITY	TBD

ALLOWABLE DECK LOADS	
UNIFORM DECK LOAD	2,343 LBF/FT ²
FRAME POINT LOAD (MID)	52,698 LBF
FRAME POINT LOAD (END)	46,022 LBF
HALF FR POINT LOAD (MID)	
HALF FR POINT LOAD (END)	
DECK LONG'L PT LOAD (MID)	6,436 LBF
DECK LONG'L PT LOAD (END)	17,000 LBF
LONG'L BHD PT LOAD	187,987 LBF
CL STANCHION PT LOAD	137,852 LBF
INBD STANCHION PT LOAD	114,518 LBF
OUTBD STANCHION PT LOAD	114,518 LBF
TRANSVERSE BHD PT LOAD	95,949 LBF
ALLOWABLE LOADS BASED ON	Deck Strength Analysis, Foss Maritime Company, 3/26/2019.

DECK GEAR	
EMERGENCY LINE	

DIMENSIONS	
REG. GT.	
REG. NT.	
ITC GT.	742
ITC NT.	222
DRAFT MIN	
DRAFT MAX	
REG. LENGTH	170.6'
REG. BREADTH	50'
MOULDED DEPTH	12'
LENGTH OVERALL	
BEAM OVERALL	
AIR DRAFT	
LIGHTSHIP	

REGULATORY	
ABS LL	N
ABS CLASS	N
USCG INSP	N
REGISTRY	Y
COASTWISE	Y

REMARKS	
SISTER VESSELS	