

JUSTINE FOSS

VESSEL SHEET



FOSS

OFFICIAL #: 575361

ABS #: 7611412

LR / IMO #:



DIMENSIONS	
REG. GT.	198
REG. NT.	134
ITC GR TONS	424
ITC NT TONS	127
REGULAT. GT	198
REGULAT. NT	134
DRAFT MIN	
DRAFT MAX	14.6'
REG. LENGTH	118.7'
REG. BREADTH	34.0'
REG. DEPTH	14.6'
LOA	126.0'
MAX BREADTH	35.5'
MIN HEIGHT	52.8'
MAX HEIGHT	52.8'
DISPLACEMENT	976 ST

REGULATORY	
ABS LL	Y
ABS CL	N
USCG INSP	N
REGISTRY	Y
COASTWISE	Y
TITLE XI	N
CCF	N
SOLAS	N

CREWING REQS	
FULL OCEAN	6
OCEAN CREW	6
SHORT CREW	

VESSEL DESCRIPTION	
VSL TYPE	Twin Screw Tug
SERVICE	Ocean Going
CALLSIGN	WYL4978
HAIL. PORT	Seattle, WA
OLD NAMES	
DATE BUILT	1976
REBUILT	
BUILDER	McDermott Shipyard, LA

MACHINERY	
CONFIG	Twin Engine, Twin Screw
ME [# ,TYPE]	(2) GM EMD 12-645-E7
RED. GEAR	(2) Falk 1635 MRSF, 3.95:1
PROPELLER	5-Blades 110" x 80/86", CL
TAILSHAFT (S)	10" x 36'-8-7/8"
ME COOLING	Fernstrum Keel Coolers
MAX ME RPM	900
RATED HP	4,300
CBHP	4,300
BOW	
BOLLPULL	107,500 ahead 60,200 astern
AUX #1	GM Detroit 6V-71 115 Kw, 460/115V AC
AUX #2	GM Detroit 6V-71 115 Kw, 460/115V AC
AUX#3	GM Detroit 6V-71

ELECTRONICS	
AUTO PILOT	Decca Arkas DP 450 G
GYRO COMP	Sperry SR 130
RADAR	#1 Decca BT 500 Brite track #2 Decca BT 500 Brite Track #3
LORAN	#1 Furuno LP1000 #2
SAT NAV	#1 Trimble Nav Trac GPS #2
WEATHER FAX	Furuno
GMDSS	
FATHOM	Raytheon Ray DE726A
VHF	#1 SEA 156 #2 SEA 156 #3
PORTABLE VHF	Standard
UNF/PRIVACY	Motorola
CITIZEN BRAND	
SSB	#1 SEA 222 #2 SEA 222
CELLULAR	
MARINE RADIO	Drake SSR1
ALARM PANEL	Harris Electric
LOUD HAILER	Bogen C10
FACSIMILE	
SOUND PHONE	
INTERCOM	
MAG COMPASS	
GPS	
DIRECT FIND	
EPIRB	ACR RLB-32

TANKS [# / TOTAL CAPACITY]	
FUEL	11 /105,000 gal
HYDRAULIC	140 gal
FOAM	N/A
BALLAST	
LUBE	3,080 gal
WATER	(2) 4,200 gal.

DECK GEAR	
ANCHOR GEAR	2500# w/7 shots 1-1/8" chain
BOW WINCH	Foss Bow Winch
BOW WIRE	200' x 1-18" Ship Wire
TOW WINCH	Markey TDSD-32 double drum
TOW WIRE	2,000' x 2-1/4" IWRC
TOW WIRE #2	2,200' x 2" IWRC
DECK CRANE	2,000 lbs. capacity Slattery
DK CRANE #2	
UNDER RIDER	
STERN LINE	
WORK BOAT	Davidson

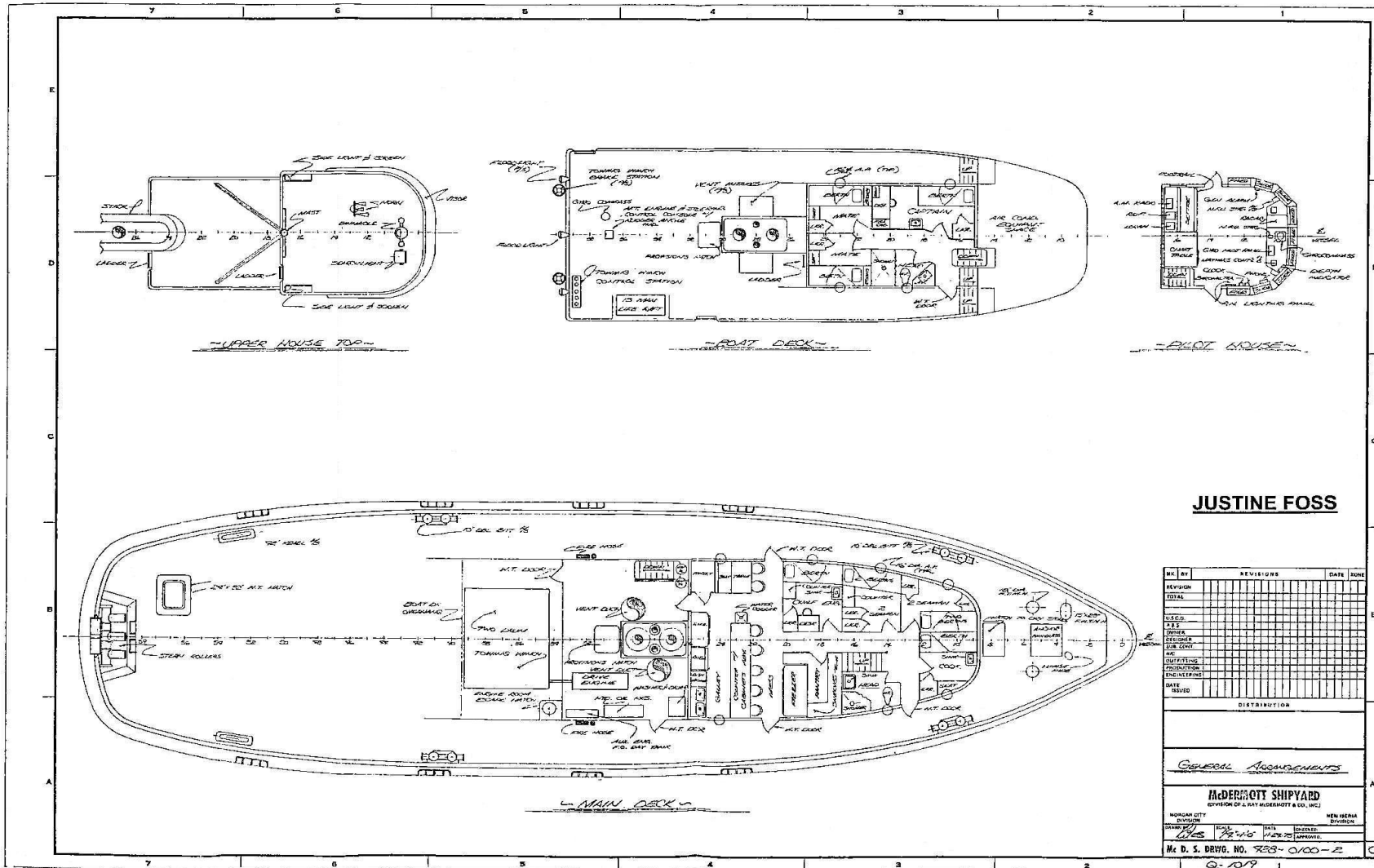
ENGINE ROOM EQUIPMENT	
MSD	
FIRE PUMP	Peabody
HOSE CONN	
MONITOR	
FIXED SYS	
FUEL TRAN	
STEERING	

REMARKS		
GMDSS:	SAT Phone:	AIS Unit:
Bow thruster: None	Sister vessels: Barbara Foss, Jeffrey Foss	

JUSTINE FOSS

GENERAL ARRANGEMENT PLAN

www.fossmaritime.com



ALWAYS SAFE. ALWAYS READY.

