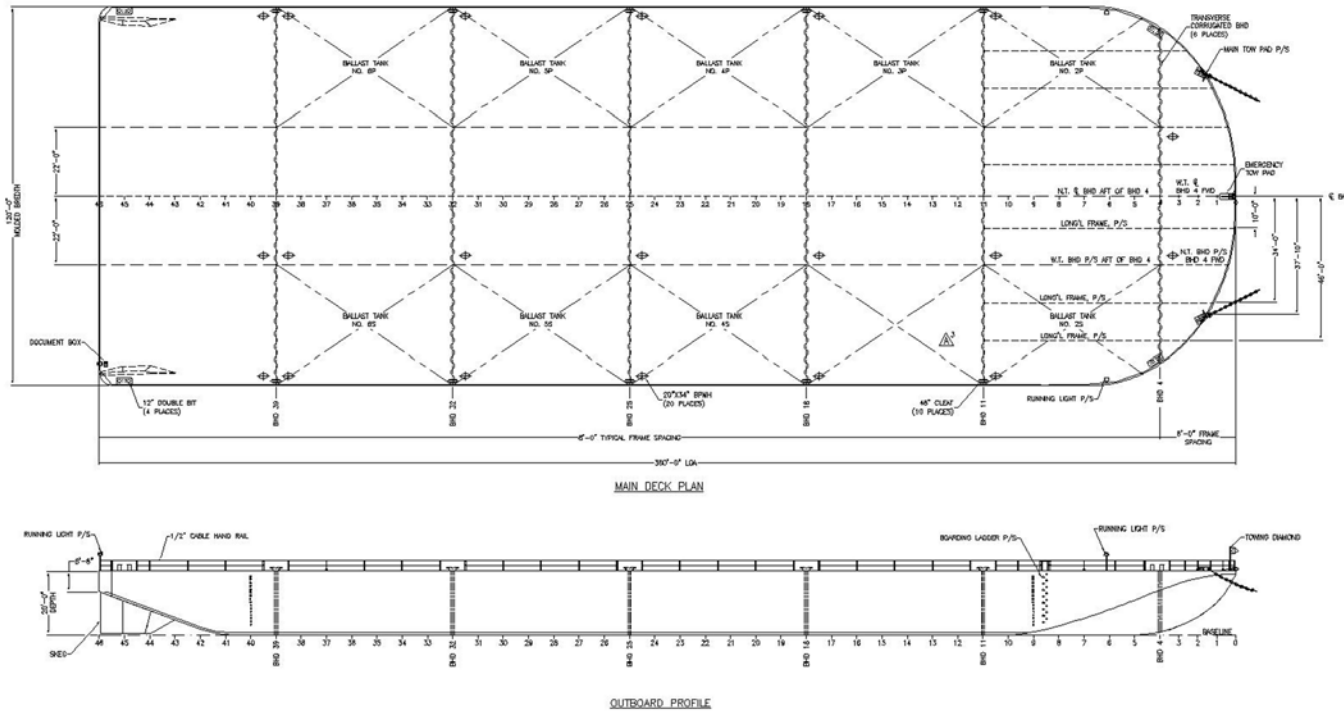




360' x 120' x 20' Deck Cargo Barge FOSS 3612

ALWAYS SAFE. ALWAYS READY.

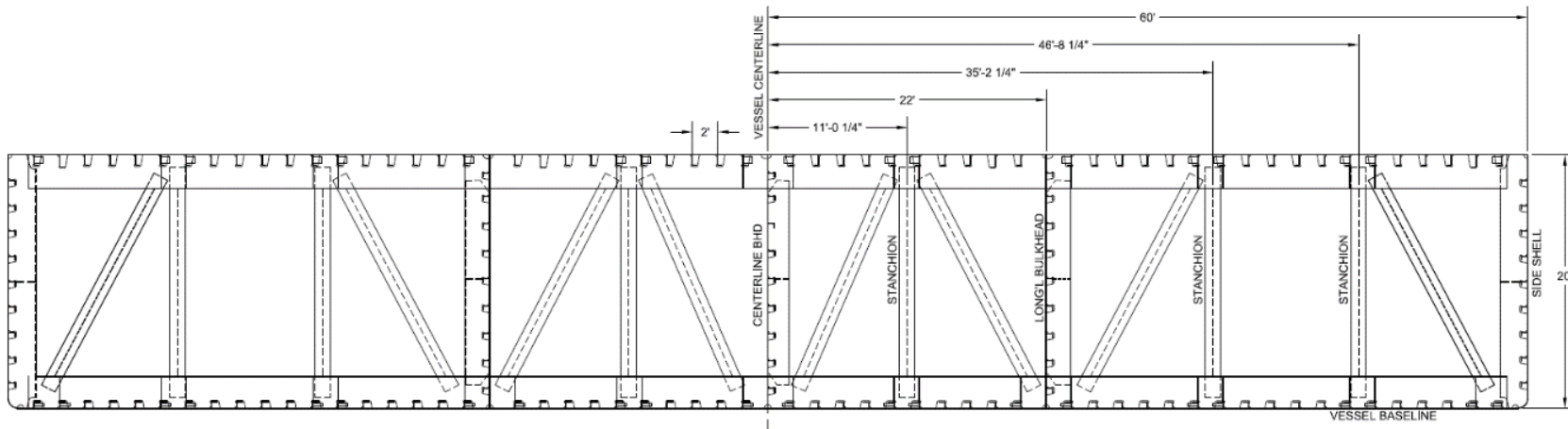


Vessel Name	FOSS 3612	Reg. Length	344.67 ft (360 ft LOA)	Deadweight Capacity	15,325 ST
Official No.	1255436	Reg. Breadth	120 ft	Useable Deck Area	35,800 ft ²
VSL Type	Deck Cargo Barge	Reg. Depth	20 ft		
Service	Unrestricted	Draft Max	15 ft (estimated)	Class Certificate Expires	TBD
Cargo Type	General deck cargo	USCG COI	Yes	USCG COI Expires	TBD
Classification	ABS ✕A1, Barge for Unlimited Ocean Service	International Load Line Certificate		International Load Line Certificate	TBD
Registry	U.S. Flag	Tonnage	ITC Gross TBD / ITC Net TBD		
Year Built	2014				
Builder	Gunderson Marine LLC				



360' x 120' x 20' Deck Cargo Barge FOSS 3612

ALWAYS SAFE. ALWAYS READY.



SUMMARY OF ALLOWABLE LOADS

Longitudinal Strength:

Maximum Still-water Bending Moments
 In Port = 243,797 LT*ft
 At Sea = 132,874 LT*ft

Maximum Still-water Shear Forces:

In Port = 6,426 LT
 At Sea = 4,126 LT

Main Deck Load Rating:

Uniform Pressure = 4,160 lbs/ft²

Transverse Frames:

Point Load = 217,600 lbs
 Linear Load = 54,396 lbs/ft

Transverse Bulkheads:

Linear Load = 148,500 lbs/ft

Longitudinal Bulkheads:

Linear Load = 60,750 lbs/ft

Intersection of Structures:

Trans & Long'l BHDs = 1,214,688 lbs

Notes:

- Load ratings based on design scantlings.
- Allowable loads based on Deck Strength Analysis, FM-1405-61-1, Rev -, Foss Maritime Company, 05/16/2014.