

DREW FOSS

VESSEL SHEET



FOSS

OFFICIAL #: 578098

ABS #: 7618418

LR / IMO #: 7626190



DIMENSIONS	
REG. GT.	198
REG. NT.	134
ITC GR TONS	424
ITC NT TONS	127
REGULAT. GT	198
REGULAT. NT	134
DRAFT MIN	
DRAFT MAX	14.6'
REG. LENGTH	118.7'
REG. BREADTH	34.0'
REG. DEPTH	14.6'
LOA	126.0'
MAX BREADTH	35.5'
MIN HEIGHT	
MAX HEIGHT	55.0'
DISPLACEMENT	1075ST

REGULATORY	
ABS LL	Y
ABS CL	N
USCG INSP	N
REGISTRY	Y
COASTWISE	Y
TITLE XI	N
CCF	N
SOLAS	N

CREWING REQS	
FULL OCEAN	
OCEAN CREW	
SHORT CREW	

VESSEL DESCRIPTION	
VSL TYPE	Twin Screw Tug
SERVICE	Ocean
CALL SIGN	WYL5445
HAIL. PORT	Seattle, WA
OLD NAMES	
DATE BUILT	1976
REBUILT	
BUILDER	McDermott Shipyard, LA

MACHINERY	
CONFIG	Twin Engine, Twin Screw
ME [# ,TYPE]	(2) GM EMD 12-645-E6
RED. GEAR	(2) Falk 1230 MRDE-E, 4.08:1
PROPELLER	5-blades, 102" x 72/76", Coolidge
TAILSHAFT (S)	10" x 36'8-7/8"
ME COOLING	Fernstrum Keel Coolers
MAX ME RPM	900
RATED HP	3,000
CBHP	3,000
BOW	
BOLLPULL	64,400 lbs. ahead 42,000 lbs. astern
AUX #1	GM Detroit 6V-71 115 Kw, 460/115 V AC
AUX #2	GM Detroit 6V-71 115 Kw, 460/115 V AC
AUX#3	GM Detroit 6V-71 Tow Cat

ELECTRONICS	
AUTO PILOT	Decca Arkas DP 450 GPS
GYRO COMP	Sperry SR 130
RADAR	#1 Decca Bridgemaster #2 Decca Bridgemaster #3
LORAN	#1 Furuno LP1000 #2
SAT NAV	#1 #2
WEATHER FAX	Furuno 208A
GMDSS	
FATHOM	Raytheon DE726A
VHF	#1 SEA 156 #2 SEA 156 #3
PORTABLE VHF	Standard
UNF/PRIVACY	
CITIZEN BRAND	
SSB	#1 SEA 222 #2 SEA 222
CELLULAR	
MARINE RADIO	Drake SSR1
ALARM PANEL	Harris
LOUD HAILER	
FACSIMILE	
SOUND PHONE	
INTERCOM	
MAG COMPASS	
GPS	
DIRECT FIND	
EPIRB	Lo-Kata 406-2A

TANKS [# / TOTAL CAPACITY]	
FUEL	11 / 105,000 gal
HYDRAULIC	140 gal
FOAM	N/A
BALLAST	6,811/2,204
LUBE	4,100 gal.
WATER	2 / 4,200 gal

DECK GEAR	
ANCHOR GEAR	2500 # w/7 shots of 1-3/8" chain
BOW WINCH	Foss Bow Winch
BOW WIRE	150' x 1-1/8" Ship Wire
TOW WINCH	Markey TDSD-32 double drum
TOW WIRE	2,200' x 2" IWRC
TOW WIRE #2	2,200 x 2" IWRC
DECK CRANE	Slattery
DK CRANE #2	
UNDER RIDER	
STERN LINE	
WORK BOAT	

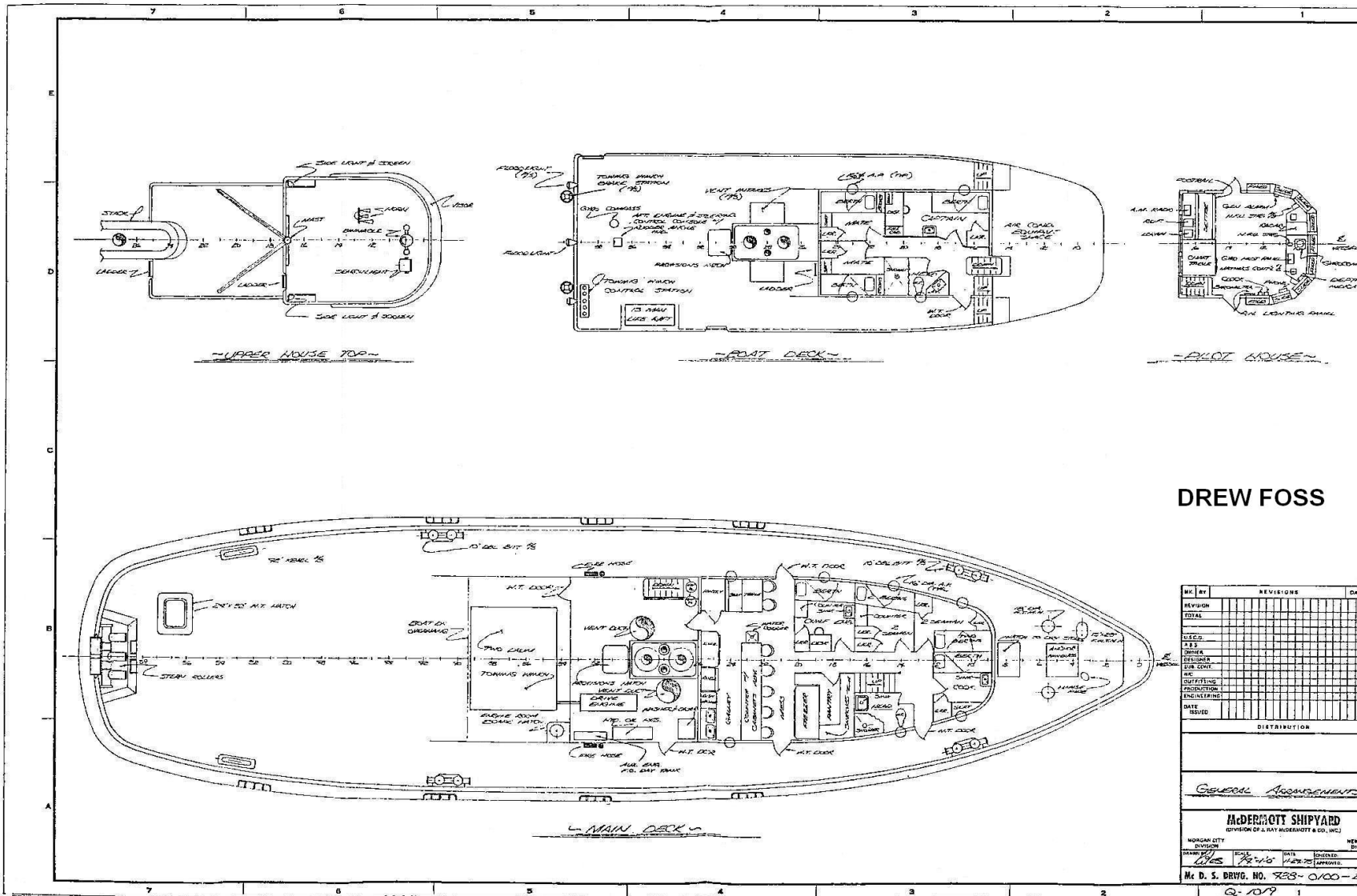
ENGINE ROOM EQUIPMENT	
MSD	
FIRE PUMP	Peabody
HOSE CONN	(2) 1-1/2"
MONITOR	
FIXED SYS	Kidde Halon 1301
FUEL TRAN	
STEERING	

REMARKS		
GMDSS:	SAT Phone:	AIS Unit:
Bow thruster: None		Sister vessels: Sidney Foss, Stacey Foss

DREW FOSS

GENERAL ARRANGEMENT PLAN

www.fossmaritime.com



DREW FOSS

NO.	BY	REVISIONS	DATE
1			
2			
3			
4			
5			
6			
7			
8			
9			
10			
11			
12			
13			
14			
15			
16			
17			
18			
19			
20			
21			
22			
23			
24			
25			
26			
27			
28			
29			
30			
31			
32			
33			
34			
35			
36			
37			
38			
39			
40			
41			
42			
43			
44			
45			
46			
47			
48			
49			
50			

DISTRIBUTION

GENERAL ARRANGEMENTS

McDERMOTT SHIPYARD
 DIVISION OF L. RAY McDERMOTT & CO., INC.
 HOUSTON, TEXAS
 Mc D. S. DRWG. NO. 933-0100-2
 Q-109

ALWAYS SAFE. ALWAYS READY.

