

CAPT FRANK MOODY

VESSEL SHEET

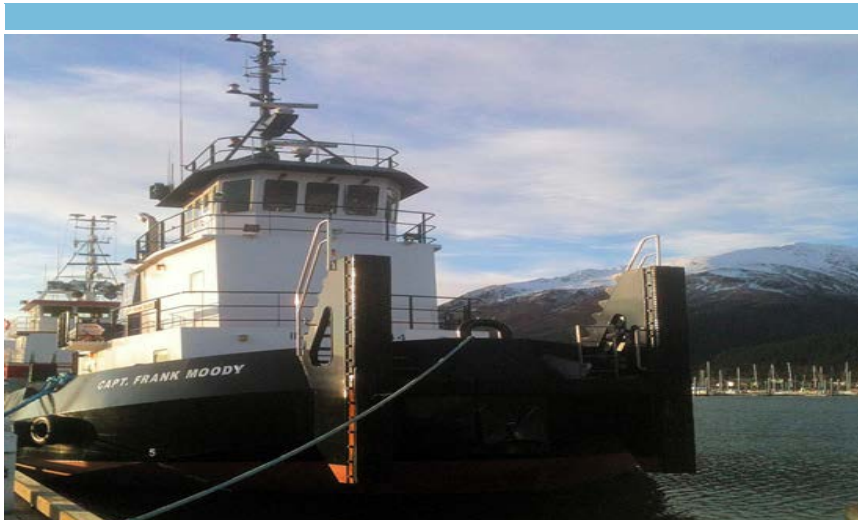


OFFICIAL #: 1231960

ABS #:

LR / IMO #: 9627344

HULL #: 015



DIMENSIONS	
REG. GT.	166
REG. NT.	112
DRAFT MIN	3.2 ft
DRAFT MAX	4.3 ft
REG. LENGTH	72.6 ft
REG. BREADTH	32.0 ft
REG. DEPTH	7.2 ft
LOA	76.0 ft
DISPLACEMENT	

REGULATORY	
ABS LL	No
ABS CL	NO
USCG INSP	No
REGISTRY	U.S.
COASTWISE	Yes
SOLAS	No

CREWING REQS	
FULL OCEAN	8
OCEAN CREW	6
SHORT CREW	4

VESSEL DESCRIPTION	
VESSEL TYPE	Shallow Draft Tug
SERVICE	Ocean Towing/River Service
CALL SIGN	WDF7737
HAIL. PORT	Anchorage, AK
OLD NAMES	
DATE BUILT	June 2013
REBUILT	
BUILDER	Foss Shipyard-Rainier, OR

MACHINERY	
CONFIG	Conventional Triple Screw
ME [# ,TYPE]	3 Caterpillar C18 DITA, Tier 2, 479 hp
RED. GEAR	Twin Disc MGX 5135SC
PROPELLER	Triple Screw, 5 blade 41" X 27.5" SS
TAIL SHAFT (S)	4" Diameter
ME COOLING	Keel cooled
MAX ME RPM	1800
RATED HP	1,437
BOLL PULL	25,000 (est)
GENERATOR	
AUX #1	CAT C4.4, 99kW, keel cooled
AUX #2	CAT C4.4, 99kW, air cooled
AUX#3	None

ELECTRONICS	
AUTO PILOT	Simrad AP50
GYRO COMP	
RADAR #1	Furuno NAVNET
#2	Furuno AMBIENT NAV
SAT NAV #1	Furuno SC50
VHF #1	Icom IC-MC604
#2	Icom IC-MC 604
#3	Icom M412
SSB #1	DIGITAL SEA 234
MAG COMPASS	Dirigo
EPIRB	2DCC5 1F7A2 FFBFF
LOUD HAILER	SEA 857
FIRE PANEL	AUTO PULSE IQ636X-2
SAR FINDER	SEA MARSHALL
IMMERSION SUITS	10 TOTAL
LIFE RINGS	3 TOTAL / 2 WITH LIGHTS AND LINE
LIFE RAFT	SOLAS A 8 PACK

TANKS [# / TOTAL CAPACITY]	
FUEL	7 / 24,900 gal
HYDRAULIC	TBD
FOAM	N/A
BALLAST	N/A
LUBE	1 / 525 gal
WATER	2 / 3,100 gal

DECK GEAR	
ANCHOR GEAR	Rapp-Hydra-Pro RHP 0010, 220' of 1" wire rope & 60' of 3/4" chain
PUSH WINCH	Patterson WWP 65E
PUSH WIRE	Spectra
TOW WINCH	Markey TES-20; 20 HP 480 VAC motor
TOW WIRE	1250' of 1-1/4" wire rope
TOW WIRE #2	None
DECK CRANE	ESI T-055M
DK CRANE #2	None

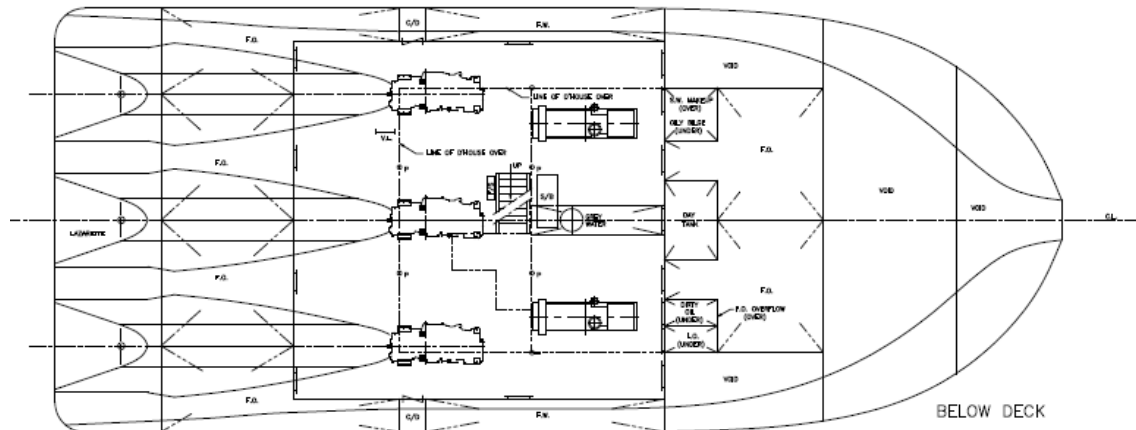
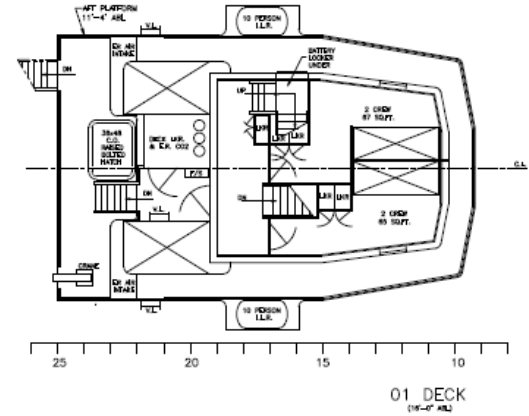
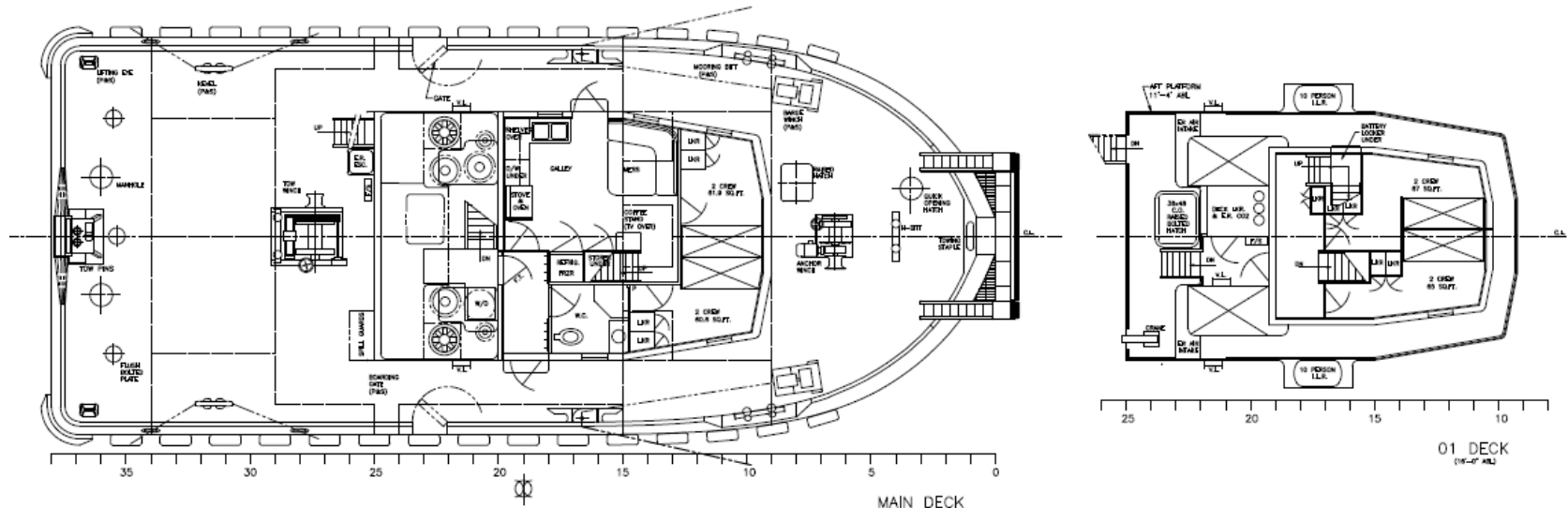
ENGINE ROOM EQUIPMENT	
MSD	Fast L-2X
FIRE PUMP	Barnes 110 GPM
HOSE CONN	1.5 " dia
MONITOR	None
FIXED FIRE SYS	FM200 Auto Release
FUEL TRAN	Flowserve 5 hp
STEERING	Kobelt

REMARKS			
GMDSS:	SAT Phone: IRIDIUM	AIS Unit:	Furuno FA 150
Bow thruster:	None	Sister vessel:	Emmett Foss
Designer:	BMT Fleet Technologies	SAT Phone:	Iridium 9555

VESEL NAME

GENERAL ARRANGEMENT PLAN

www.cookinlettug.com



PRINCIPAL PARTICULARS

LENGTH OVERALL (HULL)	70'-0"
BREADTH (HULL)	30'-0"
DEPTH (LEAST MLD)	6'-6"
FUEL OIL CAPACITY (95%)	23,700 GAL
FRESH WATER CAPACITY (100%)	4,175 GAL
LUBE OIL CAPACITY	250 GAL
DIRTY OIL	250 GAL
DIRTY BILGE	500 GAL
GREY WATER	240 GAL
ACCOMMODATIONS	8 PERSONS