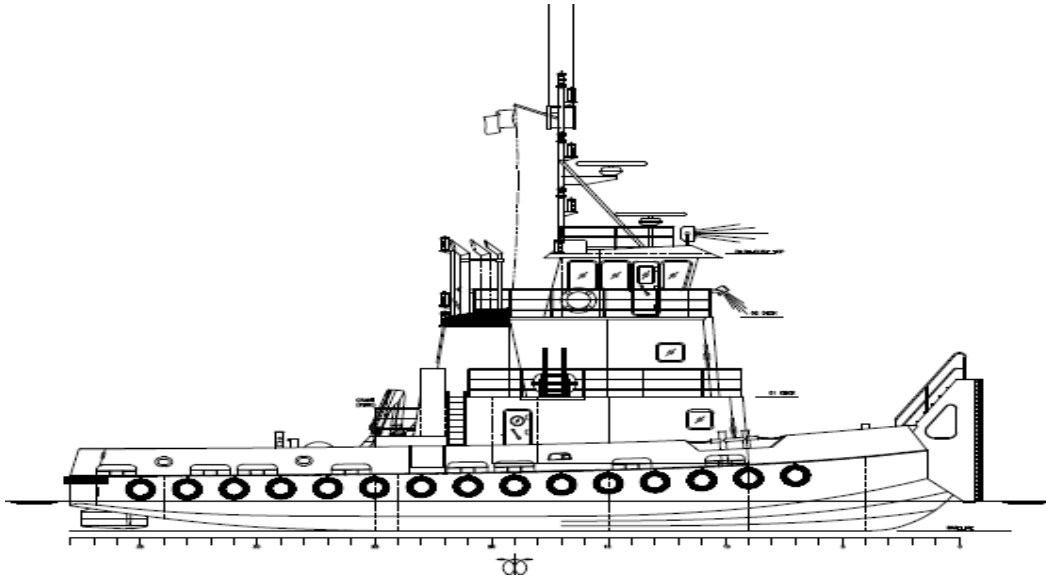


BRISTOL WIND

VESSEL SHEET



VESSEL DESCRIPTION	
Official	1246298
VSL TYPE	Shallow Draft Tug
SERVICE	Ocean Towing / River Service
CALLSIGN	WDG8362
HAIL. PORT	Seattle, WA
OLD NAMES	Emmett Foss
DATE BUILT	June 2013
BUILDER	Foss Shipyard, Rainier, Oregon
Sister vessel:	Capt Frank Moody
Designer	BMT Fleet Technologies

CREWING REQS	
FULL OCEAN	8
OCEAN CREW	6
SHORT CREW	4

REGULATORY	
ABS LL	No
ABS CL	No
USCG INSP	No
REGISTRY	US
COASTWISE	Yes
SOLAS	No

MACHINERY	
CONFIG	Conventional Triple Screw
ME [# ,TYPE]	3 Caterpillar C18 DITA, Tier 2, 479 hp
RED. GEAR	Twin Disc MGX 5135SC
PROPELLER	Triple Screw; 5 blade 41" x 27.5" SS
TAILSHAFT (S)	4" diameter
ME COOLING	Keel cooled
MAX ME RPM	1800
RATED HP	1,437
BOLLPULL	25,000 lbs (est)
AUX #1	Cat C4.4, 99kW, keel cooled
AUX #2	Cat C4.4, 99kW, air cooled
AUX#3	None

DECK GEAR	
ANCH GEAR	Rapp-Hydra-Pro RHP 0010, 220' of 1" wire rope & 60' of 3/4" chain
PUSH WINCHES	Patterson WWP 65E
PUSH WIRE	Spectra
TOW WINCH	Markey 1ES-20; 20 HP 480 VAC motor
TOW WIRE	1250' of 1-1/4" wire rope
TOW WIRE #2	None
DECK CRANE	ESI T-055M
DK CRANE #2	None

TANKS [# / TOTAL CAPACITY]	
FUEL	7 / 24,900 gal
HYDRAULIC	TBD
FOAM	n/a
BALLAST	n/a
LUBE	1 / 525 gal
WATER	2 / 3,100 gal

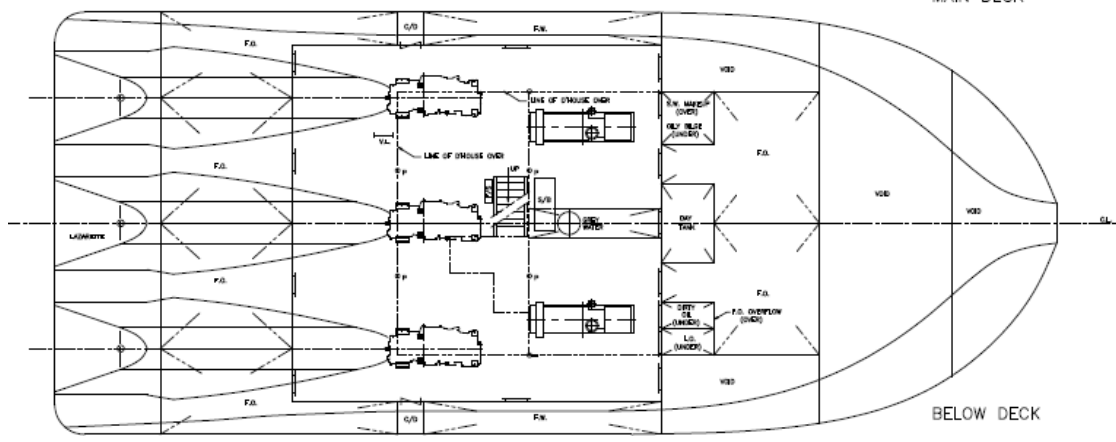
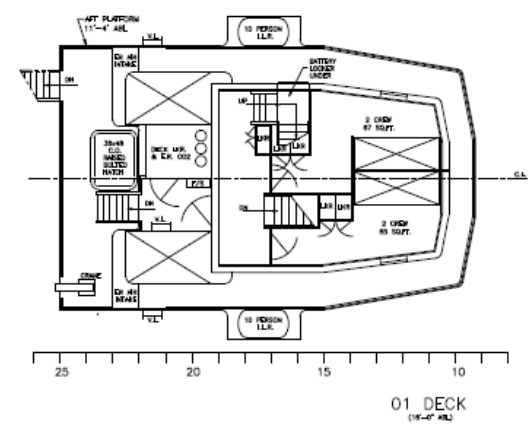
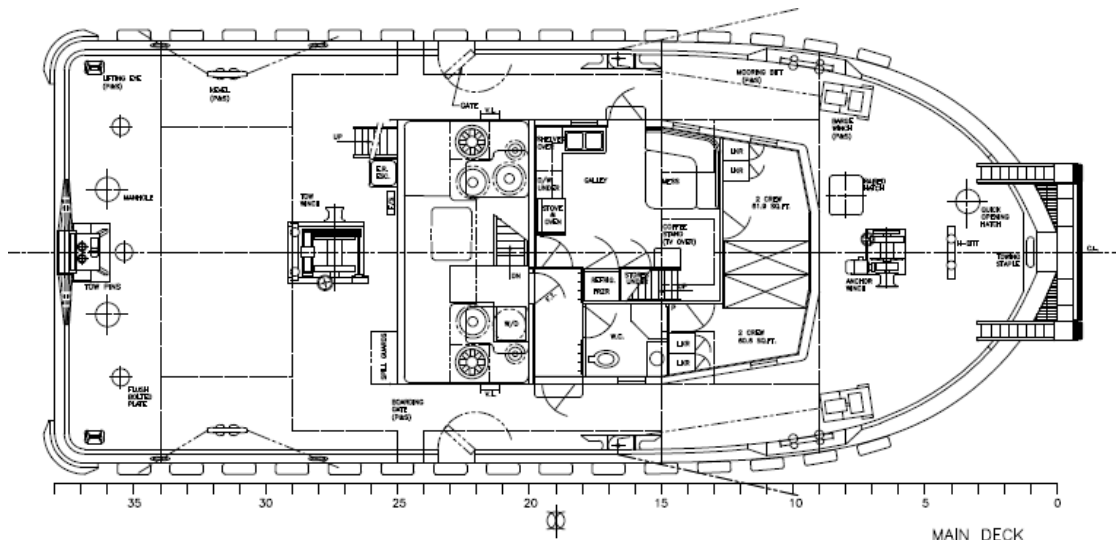
ELECTRONICS	
AUTO PILOT	Simrad AP50
RADAR #1	Furuno DR6SA 4'
#2	Furuno DR6SA 4'
SAT #1	Furuno SC50
NAV	
VHF #1	Icom 504
#2	Icom 504
#3	Icom M412
SSB #1	Shakespeare 5390
MAG COMPASS	Dirigo
SAT	Iridium 9555
AIS Unit:	Furuno FA150

DIMENSIONS	
REG. GT.	145
REG. NT.	116
DRAFT MIN	3.2 ft
DRAFT MAX	4.3 ft
REG. LENGTH	72.6 ft
REG. BREDTH	32.0 ft
REG. DEPTH	7.2 ft
LOA	76.0 ft
DISPLACEMENT	220 LT

ENGINE ROOM EQUIPMENT	
MSD	FAST L-2X
FIRE PUMP	Barnes 110gpm
HOSE CONN	1.5" dia.
MONITOR	None
FIXED SYS	None
FUEL TRAN	Flowserve 5hp
STEERING	Kobelt

BRISTOL WIND

GENERAL ARRANGEMENT PLAN



PRINCIPAL PARTICULARS

LENGTH OVERALL (M/L)	76'-0"
BREADTH (M/L)	32'-0"
DEPTH (LEAST M/L)	6'-6"
FUEL OIL CAPACITY (95%)	23,700 GAL
FRESH WATER CAPACITY (100%)	4,175 GAL
LUBE OIL CAPACITY	250 GAL
DIRTY OIL	250 GAL
GREY WASTE	500 GAL
GREY WATER	240 GAL
ACCOMMODATIONS	8 PERSONS